

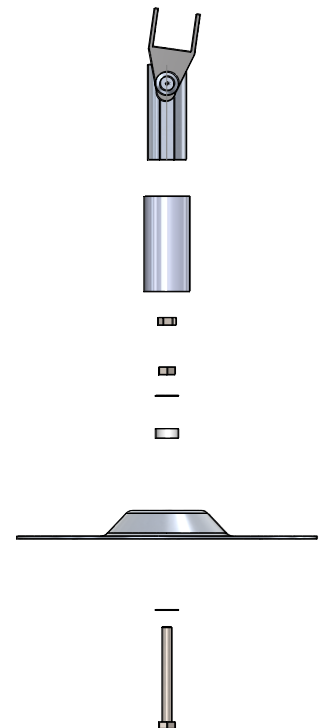
LightFix
Lightweight solar systems



For roofs which are not suitable for standard solar systems with ballast, DC Solar Systems introduces the ballast-free mounting system. The system is based on mounting anchors, and the Solar LightFix mounting system. Together, these form the LightFix PV mounting system.

LightFix features and benefits

- Insured roof warranty
- Sufficient airflow and cooling under the panels
- Quick and easy installation
- Applicable on flat and pitched roofs
- Applicable for almost all roof substructures made of wood, metal and concrete
- Roofing sleeves: choice between bitumen, EPDM, PVC and TPO
- 100% waterproof connection to any roofing material
- Short delivery times
- Very light in weight: 13.3 kg/m² including standard glass based solar panel
- System layout in accordance with Scope 12 and the new NEN7250
- Every panel accessible for maintenance
- Roof inspections and maintenance easily performed
- Panel always clamped in the sweet spot, never on the corners



The mounting system

LightFix

Lightweight solar systems



LightFix PV mounting system

The mounting anchors are available with the correct screws for each type of roof, to ensure excellent wind load resistance. The mounting anchor then connected to the roof in a watertight manner. The LightFix mounting system is then easily screwed onto the mounting anchor. The system is available to ensure panel installation angles of 5, 10 and 15 degrees. Other angles can be delivered upon request. The aluminium mounting rail is then clicked onto the LightFix rail holder. The Solar mounting rails allows a span of 2.2 m, which means fewer anchors are required.



Want to know more?

Ask our consultant to assess your location for suitability or an indicative quote. Check out our website at www.dcsolarsystems.co.uk